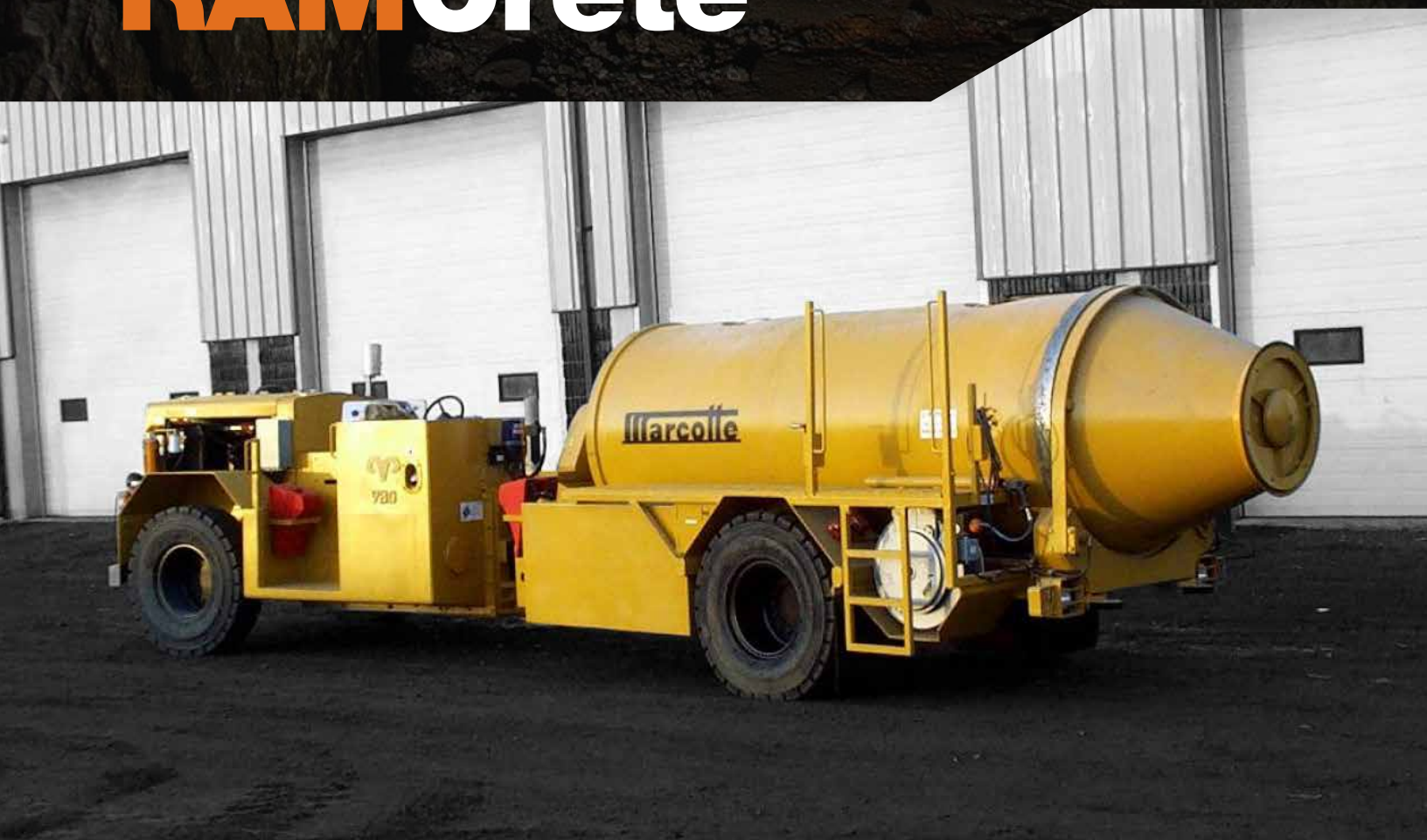


DESIGN. DEVELOP. DELIVER.



**TIMBERLAND
EQUIPMENT
LIMITED**

M60 **RAM**Crete



HOME OF THE MINEJACK® CARRIER



A MEMBER OF
TIMBERLAND
Engineered solutions. **GROUP**

www.timberlandequipment.com

M60 RAMCrete

STANDARD CARRIER FEATURES

- 24 V Electrical w/ Bostrig Fire Resistant Wires
- Engine Temperature & Pressure Warning Lights
- Transmission / Engine Temperature & Pressure Warning Gauges
- Backup Alarm
- Two (2) Forward & Two (2) Reverse Drive Lights
- One (1) Strobe Light
- Lockable Master Switch
- Hour Meter
- Volt Meter
- JIC Hydraulic Fittings & Aeroquip Hoses
- Orbital Steering
- Side Facing Compartment
- Mechanical Seats w/ Seat Belts
- ECS Catalytic Converter w/ Silencer
- Donaldson Dry Type Intake w/ Safety Element
- Front Tow Bumper
- Fire Extinguisher Bracket
- Wheel Chock Brackets

WET SHOTCRETE HAULER STANDARD FEATURES

- 6 m³ Wet Shotcrete Drum

POWERTRAIN

- Cummins QSB6.7 (240 H.P.)
- Mercedes MB904 (174 H.P.)
- Mercedes MB906 (201 H.P.)
- Mercedes MB906 (250 H.P.)
- 32,000 Series Standard Shift Transmission
- Dana 114 Front & Rear Axles
- JD1200 or JD1400 Front Axles (option)
- JD1200 or JD1400 Rear Axles with Ausco Wet Disc Brake (option)

TIRES

- 12:00 x 20 Solid Tires
- 12:00 x 20 Core Filled Tires
- 12:00 x 20 Wing Filled Tires

ADDITIONAL OPTIONS

CARRIER

- ROPS / FOPS Canopy
- ROPS / FOPS Enclosed Cab
- Cab Air Conditioning
- Cab Heat w/ Insulation
- Cab Mounted Lighting
- Air Ride Seat
- Cold Weather Package
- Air / Water Header Assembly
- Fire Extinguisher
- Fire Suppression w/ Checkfire
- Rear Tow Bumper
- Front & Rear Tow Hooks
- Front & Rear Lifting Lugs
- Stick Steering
- Emergency Steering
- Automatic Lubrication
- Firwin Blanket

- HTI Wrap
- Rear Brake Lights
- Speedometer
- Tachometer
- 120 V Inverter
- Wheel Chocks
- Wiggins Fill
- Tire Chains
- Mud Flaps

WET HAULER

- 5.1 m³, 7.1 m³ or 8.1 m³ Wet Shotcrete Drum
- Form Oil Sprayer
- Pressure Washer
- Compressor
- Accelerator Pump with Plastic Tank
- Accelerator Pump with Stainless Steel Tank
- Drum Tilt

All of our configurations are available on most carriers. At Timberland Equipment, engineering is a process of continuous product improvement; therefore specifications are subject to change without notice.

HEAD OFFICE

P.O. Box 490, 459 Industrial Avenue
Woodstock, Ontario, Canada, N4S 7Z2
tel 1.519.537.6262 fax 1.519.539.5853

BRANCH OFFICE

2291 Lasalle Boulevard
Sudbury, Ontario, Canada P3A 2A9
tel 1.705.566.5030 toll free 1.800.461.5955

www.timberlandequipment.com



ISO 9001
#1057941

AUTHORIZED DISTRIBUTOR